



Handheld Ultrasound
Scanner Manufacturer



DOUBLE PROBE ULTRASOUND

AFFORDABLE
VISIBLE - FAST - EASY

GUANGZHOU SONOHEALTH MEDICAL TECHNOLOGIES CO., LTD.

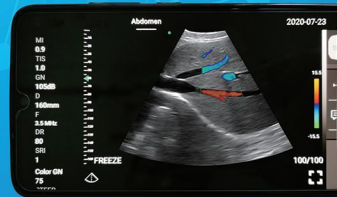
Address: Room 601, Building 3, No.7 Ruitai Road, Huangpu District, Guangzhou, China

E-mail: hello@sono-health.com

Telephone: +86-02-87831007

Phone/WhatsApp: +86-15013156300

Website: www.sono-health.com



YOU CAN USE IT ANYTIME & ANYWHERE



APPLICATION

Application Sites: Abdomen, Superficial, Lung, Cardiac, etc.

Application Directions:

- Medical students training in college: Visual understanding of human body structure or ultrasound image study.
- Private clinic: Whole body check.
- Preliminary examination: Home care, family planning.



FEATURES

- Highest cost-effective: Students can afford it, just like buying a cell phone.
- One scan whole body: Composed of convex and linear array, it can scan from abdomen to superficial, even heart.
- Small, light, built in battery: You can easily use it anywhere.



SPECIFICATION

- Scan Angle/Length: Convex 50, Linear 25mm
- Frequency: Convex probe 3.5/5.0 MHz, Linear probe 7.5/10 MHz
- Scan Mode: B, B/M, Color, PW
- Display Depth: Convex 90~305mm, Linear 20~100mm
- Power: Built-in lithium battery, wireless or USB charge 2h, work 2.5h
- Working System: iOS, Android, Windows
- WiFi Type: 802.11n/5G
- Dimension: 121x53x19mm
- Weight: 120g



WATERPROOF

Reduce medical accidents caused by cross infection, protect doctors and patients, and reduce hospital related expenses.



WIRELESS CHARGE

Easy and connect with a wireless power bank.



EASY TO USE

Simple operation, short learning curve for people without ultrasound experience.



WiFi & USB CONNECT

- Both WiFi and USB connect as you can choose.
- Use with your Android phone, Laptop, iPhone or iPad.

HIGH QUALITY IMAGES

See The Difference Great Image Quality Makes

